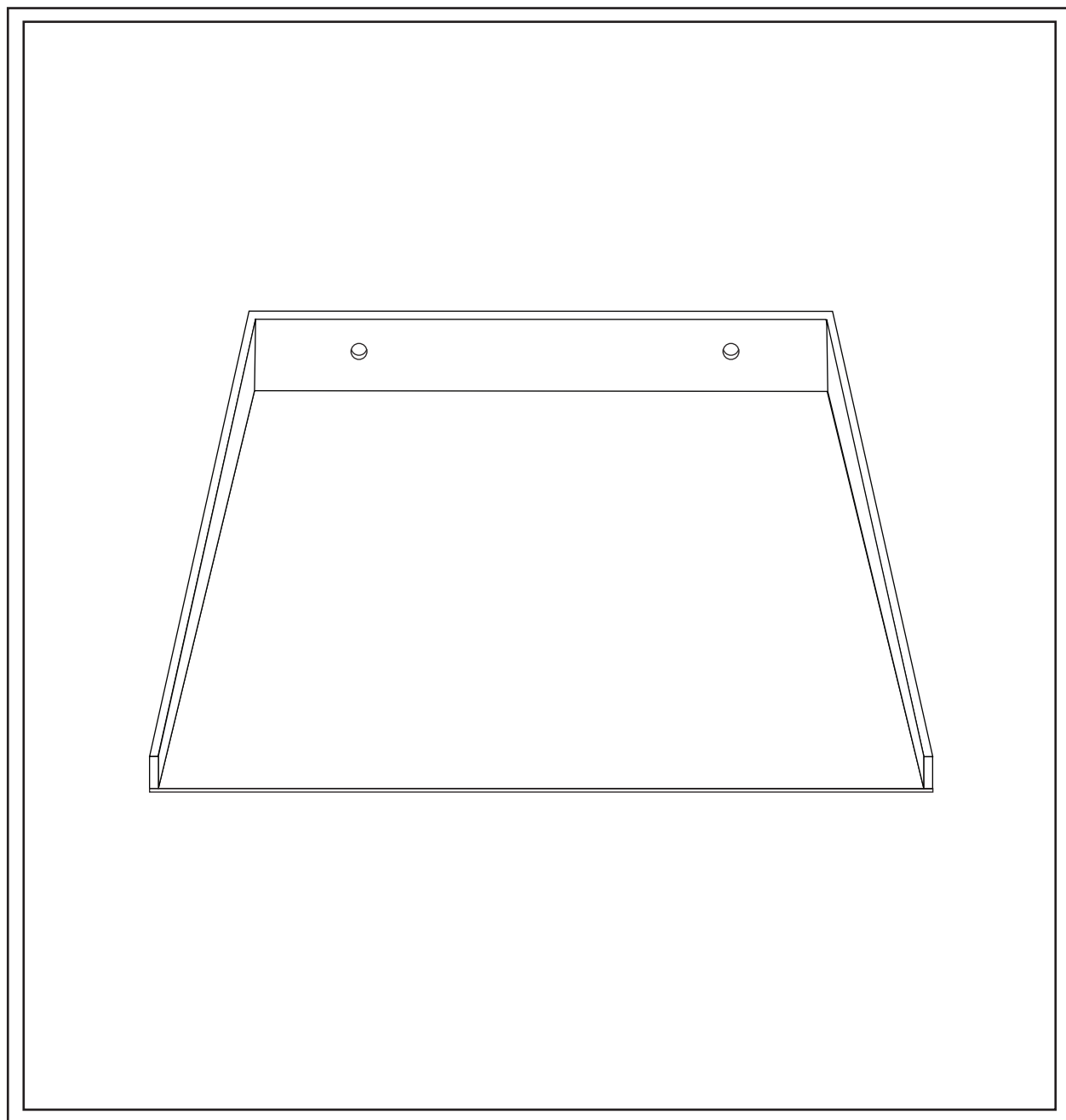


PRODUCT NAME: Mara Mini Shelf

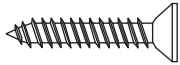
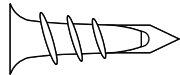
ITEM NUMBER: WS978

ASSEMBLED DIMENSIONS : 1 1/4"H x 8 1/2"W x 6 1/2" Projection



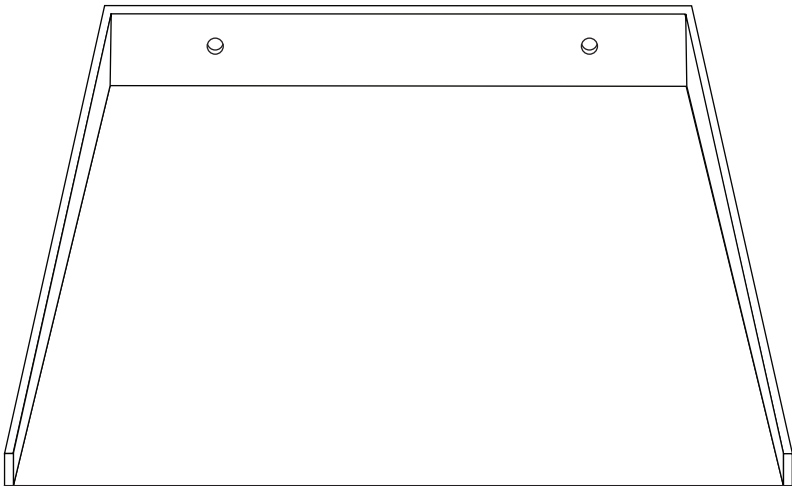
REQUIRED TOOLS:

- Phillips Screwdriver, Pencil, Hammer,
Drill with 1/4" bit
- Two person assembly suggested.

Ltr.	Qty.	Hardware Included	
A	2		Screws
B	2		Wall Anchors

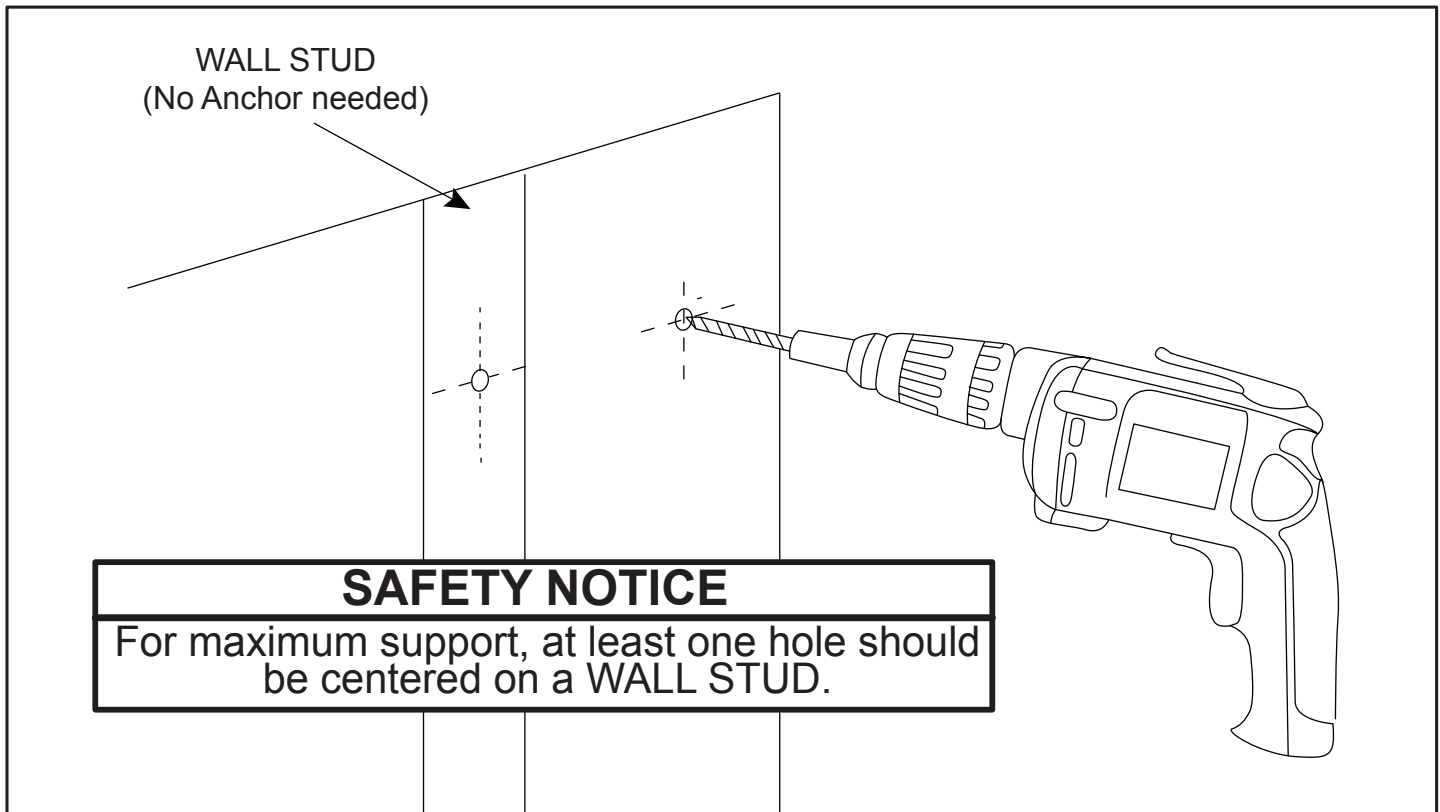
Remove all parts, hardware and protective packaging from carton and carefully arrange on a clean, level, padded surface.

NOTE: To avoid accidentally discarding small parts or hardware, retain all carton contents until assembly and installation are complete.

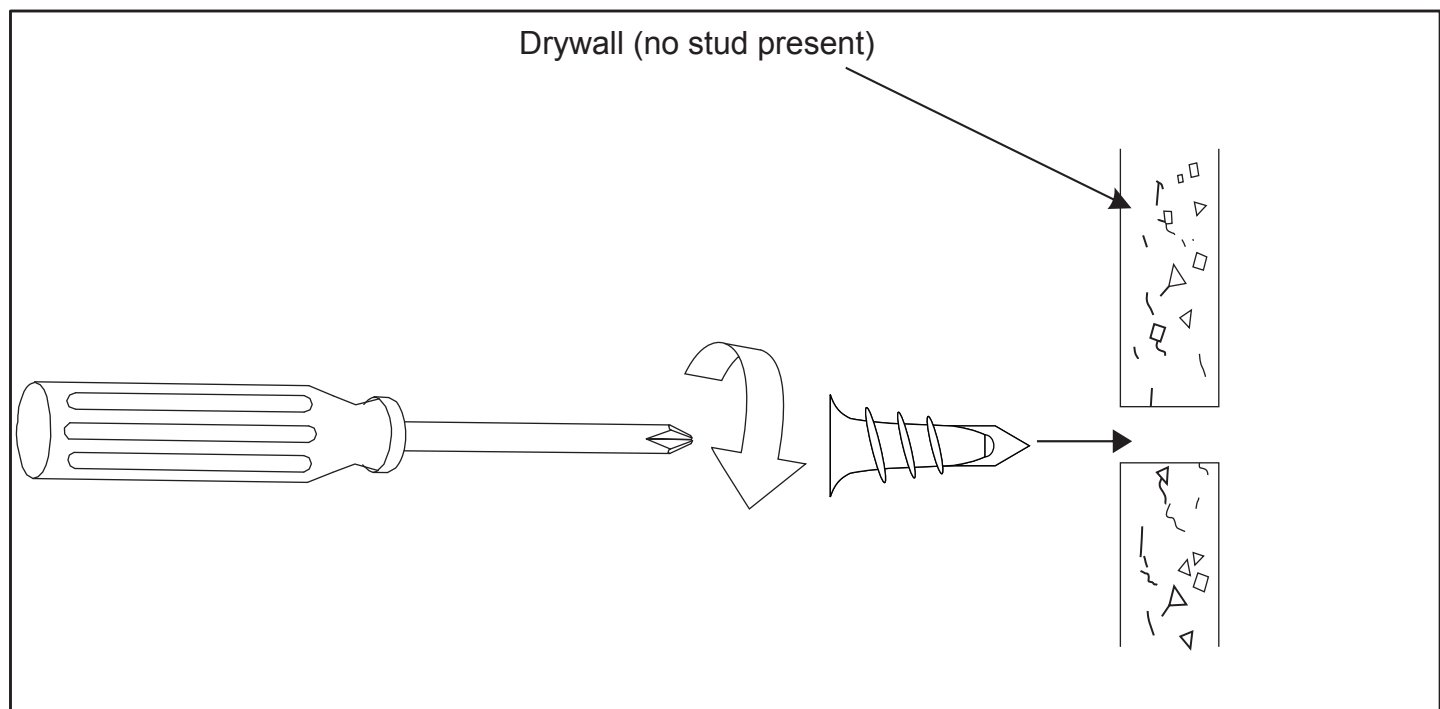
Ltr.	Qty.	Components
C	1	

STEP 1: Determine location for installation then use a Level and Pencil to mark for both holes in Shelf.
NOTE: Maximum support is provided by centering one hole over a Wall Stud and driving Screw (A) directly into Stud.

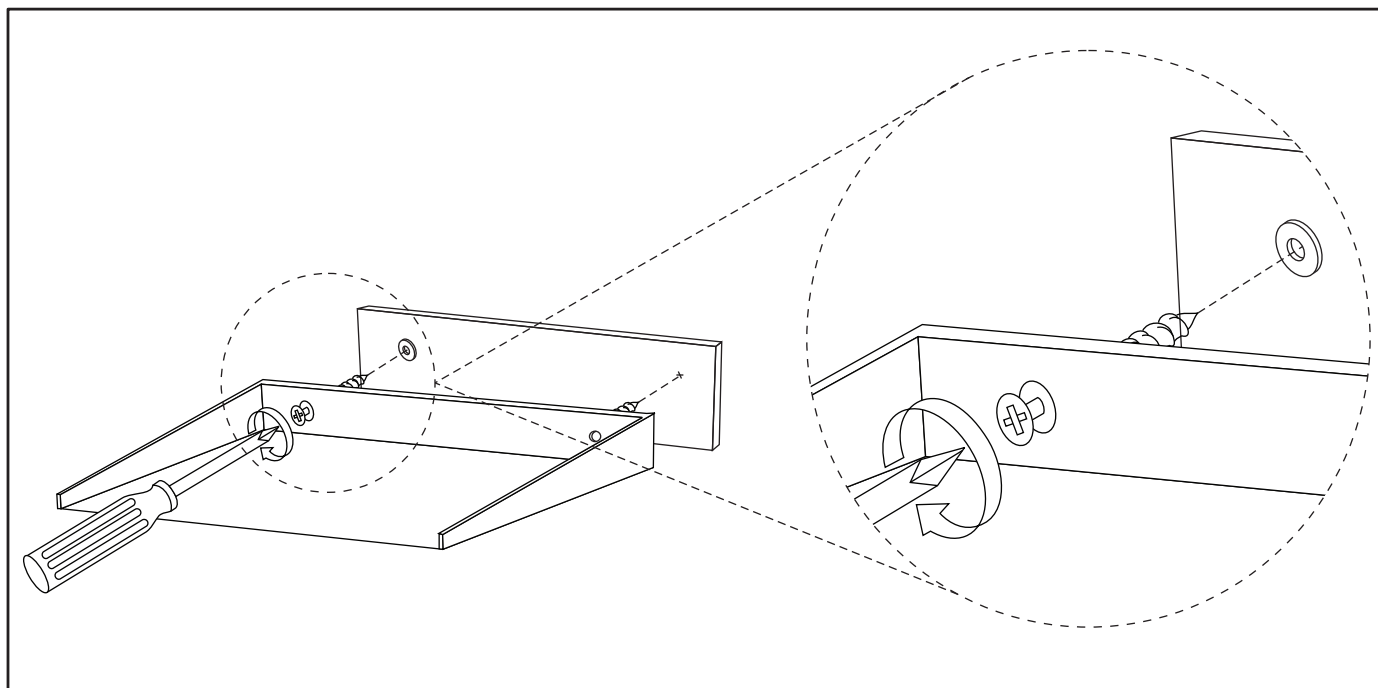
For hole located in open drywall (no stud) use a Drill with a 1/4" bit to make a small pilot hole.



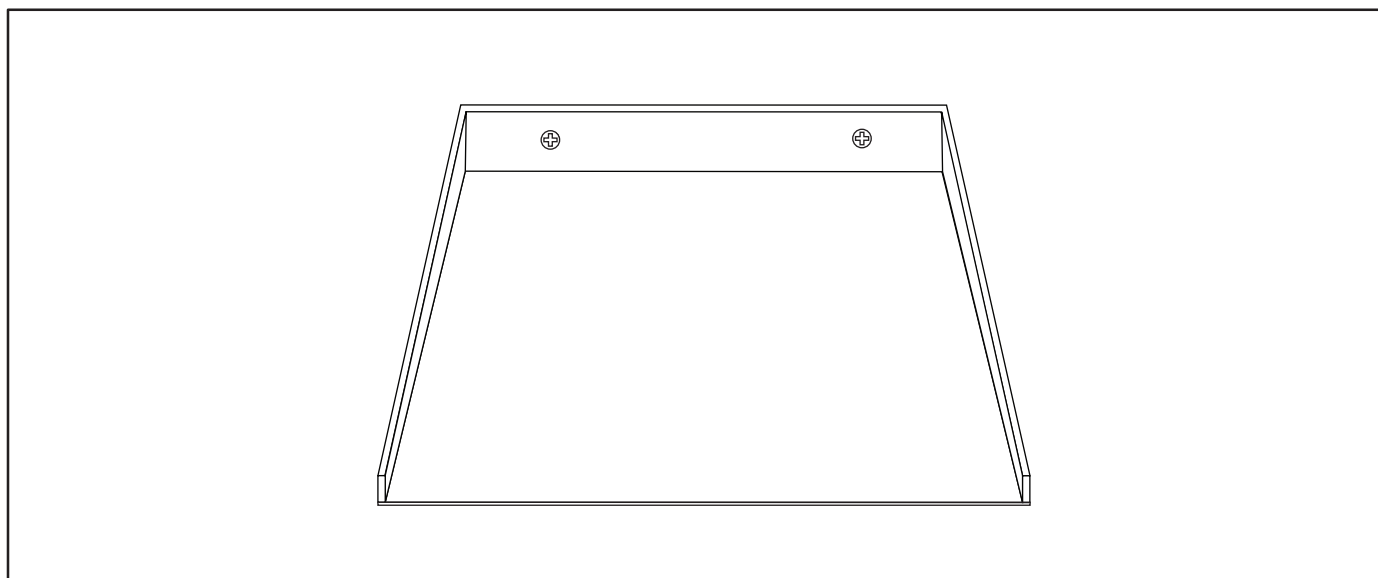
STEP 2: Gently push Wall Anchor (B) into pilot hole then turn into wall using a Phillips Screwdriver. Turn Anchor until flush with wall surface.



STEP 3: Place Shelf (C) onto wall aligning both holes over mark(s) or Wall Anchors. Insert a Screw (A) into each hole and use a Screwdriver to firmly tighten.



STEP 4: Confirm Shelf is securely attached to wall. It is now ready for use.



Cleaning & Care:

DO NOT use alcohol based products or spray polisher
as they can damage the finish. Dust with soft cloth.