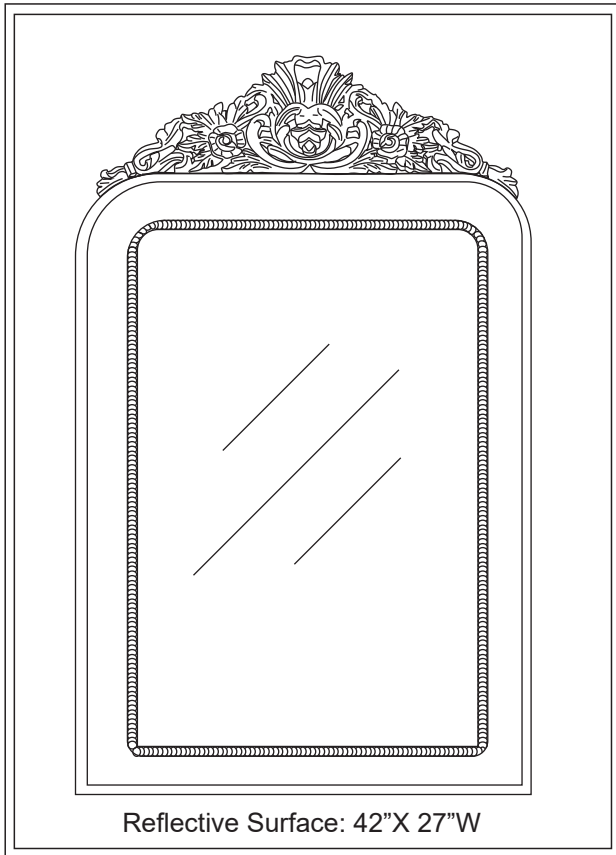




PRODUCT NAME: Windsor Mirror

ITEM NUMBER: WN268

ASSEMBLED DIMENSIONS : 60"H x 36"W x 1.5"D

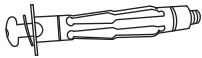

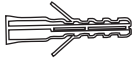
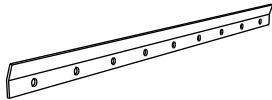



REQUIRED TOOLS:

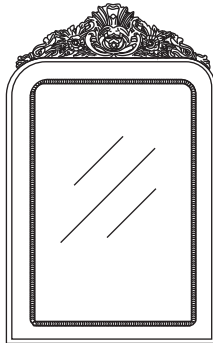
Phillips Screwdriver, Level, Pencil, Drill
with 3/8" bit.

-Two person installation recommended

ASSEMBLED WEIGHT: 57 lbs.

Ltr.	Qty.	Hardware Included	
A	2		Expansion Bolts (2.5")
B	12		Wood Screws (2")
C	12		Plastic Anchors (2")
D	1		Cleat

	Cleaning and Care
	Periodically dust with a soft, dry cloth. Protect surfaces to prevent damage. Do not use alcohol based cleaners or polishers.

Ltr.	Qty.	Components	
E	1		Mirror



SAFETY NOTICE: At least one hole in Cleat must be centered on and attached to a Wall Stud.

STEP 1: Determine location for Mirror (E) then locate and mark Wall Stud(s) directly behind Mirror. Use a Level to position French Cleat (D) on wall, being certain to center at least hole over a Wall Stud. For holes on a Stud, drive Wood Screw (B) directly into Stud. For holes where no Stud is present, see inset for using Expansion Bolt (A). Anchors (C) (Fig. 1) are SECONDARY. Use EXPANSION BOLTS first.

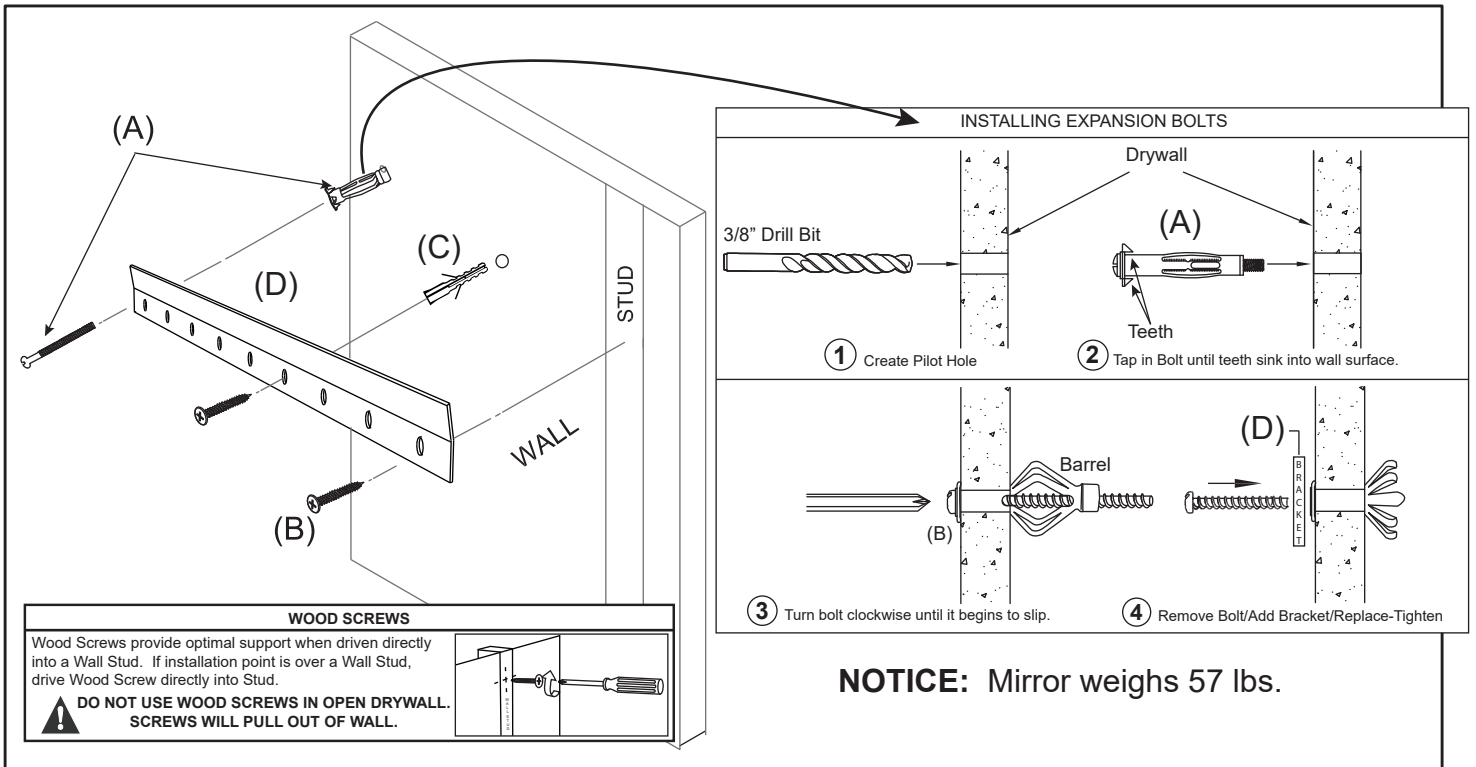
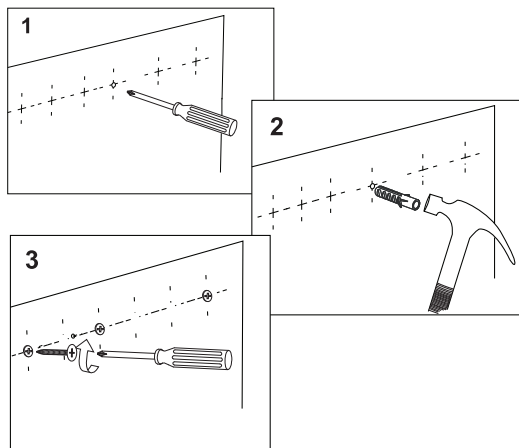


Fig. 1

INSTALLING TAP-IN ANCHORS:

1. Mark location then use a pointed tool to create a very small pilot hole.
2. Use a small hammer to gently tap in pointed end of Anchor until flush with wall surface.
3. Add item/bracket then turn in and tighten Screw.



STEP 2: With Cleat (D) secured to Wall, carefully lift Mirror (E) and lower onto Cleat (Fig. 2).

Components are designed to fit together using Mirror's weight to lock them into place (Fig. 3).

Fig. 2

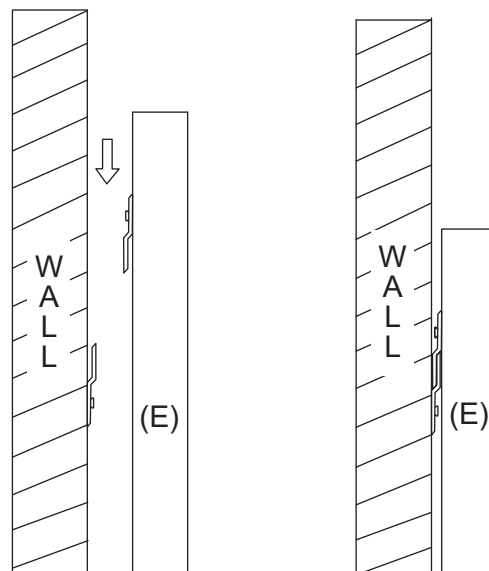


Fig. 3

