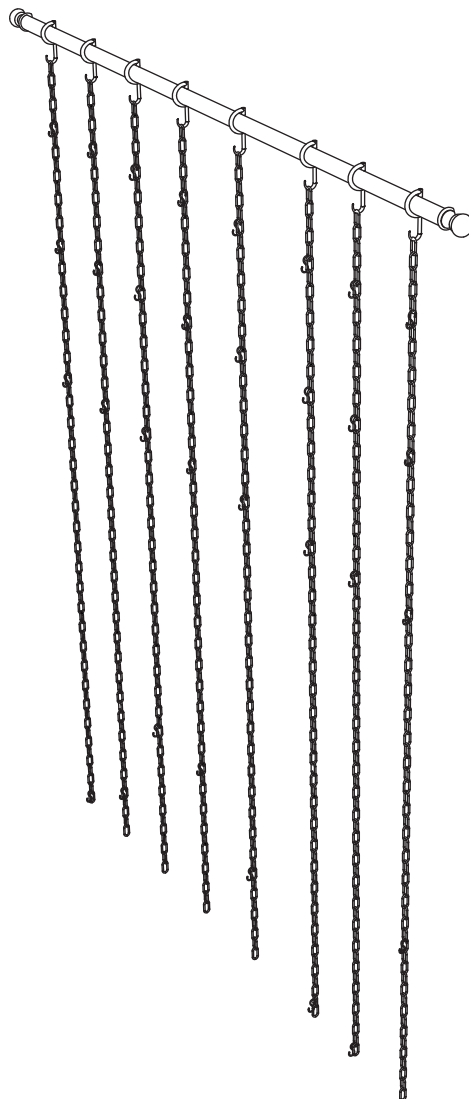




PRODUCT NAME: Gallery Wall System



ITEM NUMBER: WE026

ASSEMBLED DIMENSIONS : 75"H x 64"W x 1 1/4"D



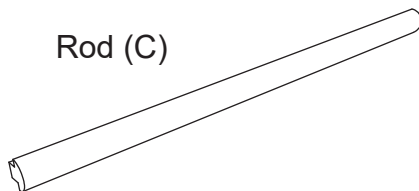




Prevent accidentally discarding small parts or hardware. Retain all carton contents until assembly and installation are complete.

⚠ Maximum support provided when one Bracket is centered on a Wall Stud.

Ltr.	Qty.	Hardware Included	
A	2		Screws
B	2		Wall Anchors

REQUIRED TOOLS:
Phillips Screwdriver, Small Hammer,
Level, Pencil

Remove all parts, hardware and protective packaging from carton and carefully arrange on a clean, level, padded surface.

Ltr.	Qty.	Components		
C	1			
D	2			
E	8			
F	24			
				
				
G	8			

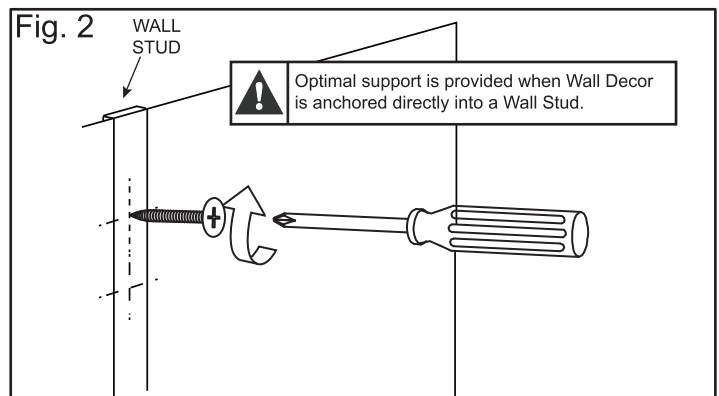
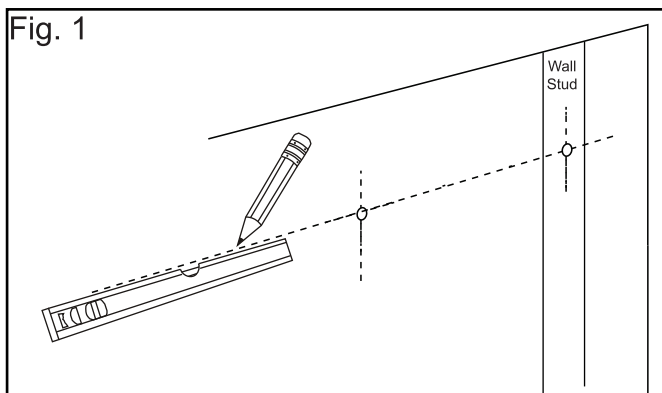
ASSEMBLY AND INSTALLATION

STEP 1: Determine location for installation, then use a Level and Pencil to mark wall (Fig. 1)
See Page 5 for creating an easy template for Keyhole Brackets.

NOTE: Maximum support is provided when at least one screw is driven directly into a wall stud.

For installation into a wall stud mark and drive Screw (A) directly into stud (Fig 2).

For installation into OPEN DRYWALL (no stud) use a Wall Anchor (B) (Page 3/Fig.3)



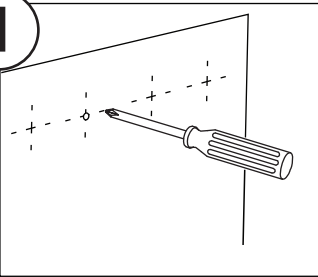


Use Wall Anchors in open drywall. Do not use when wall stud is present.

Fig. 3

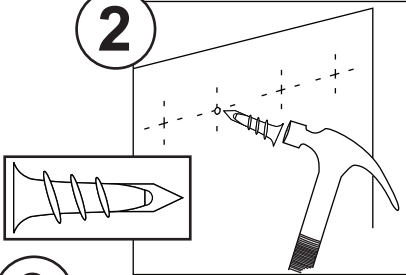
INSTALLING SCREW-TYPE WALL ANCHORS

1



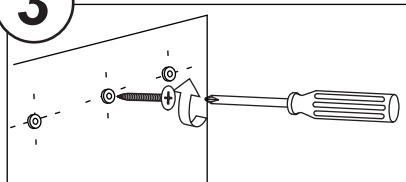
Mark location. Use pointed tool to make a very small pilot hole.

2



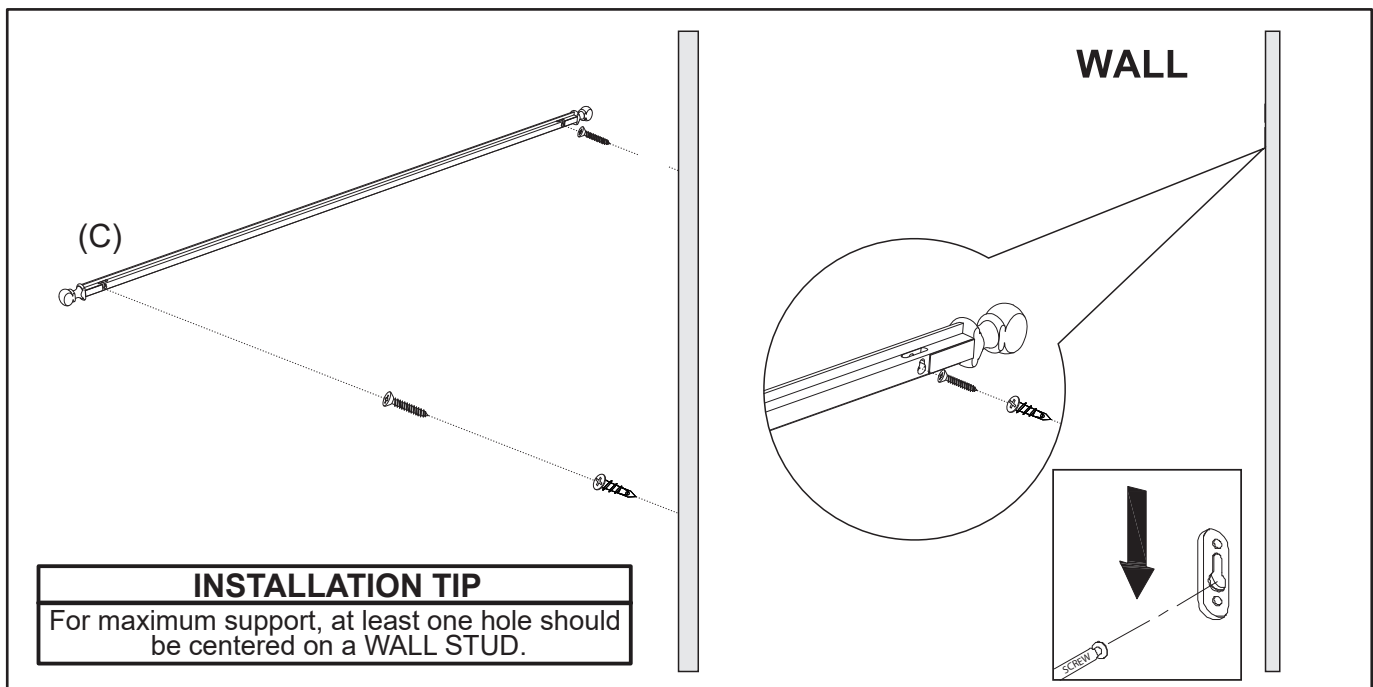
Gently tap tip of Anchor into pilot hole then use a screwdriver and turn it in until flush with wall surface.

3



Add item/Align holes. Add/tighten screw.

STEP 2: Carefully lift Wall Bracket (C) to Screw heads and push/pull down to lock in place.

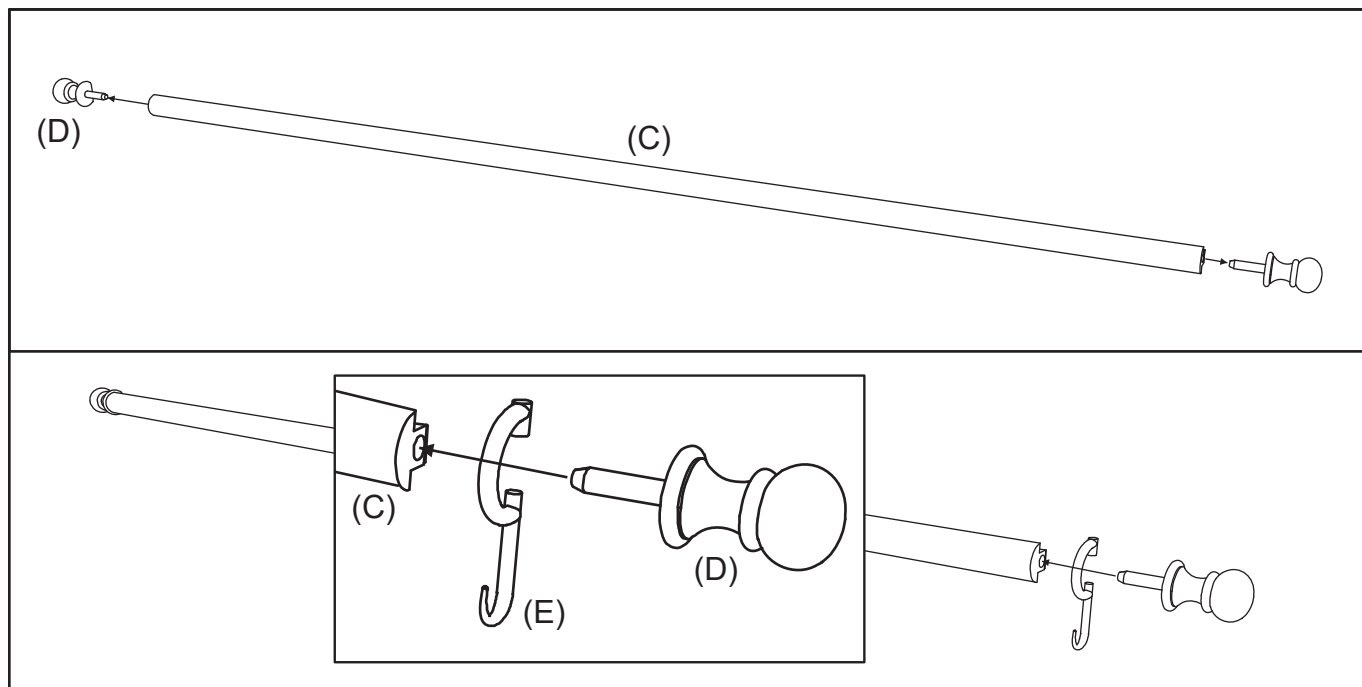


Use Wall Anchors in open drywall. Do not use when wall stud is present.




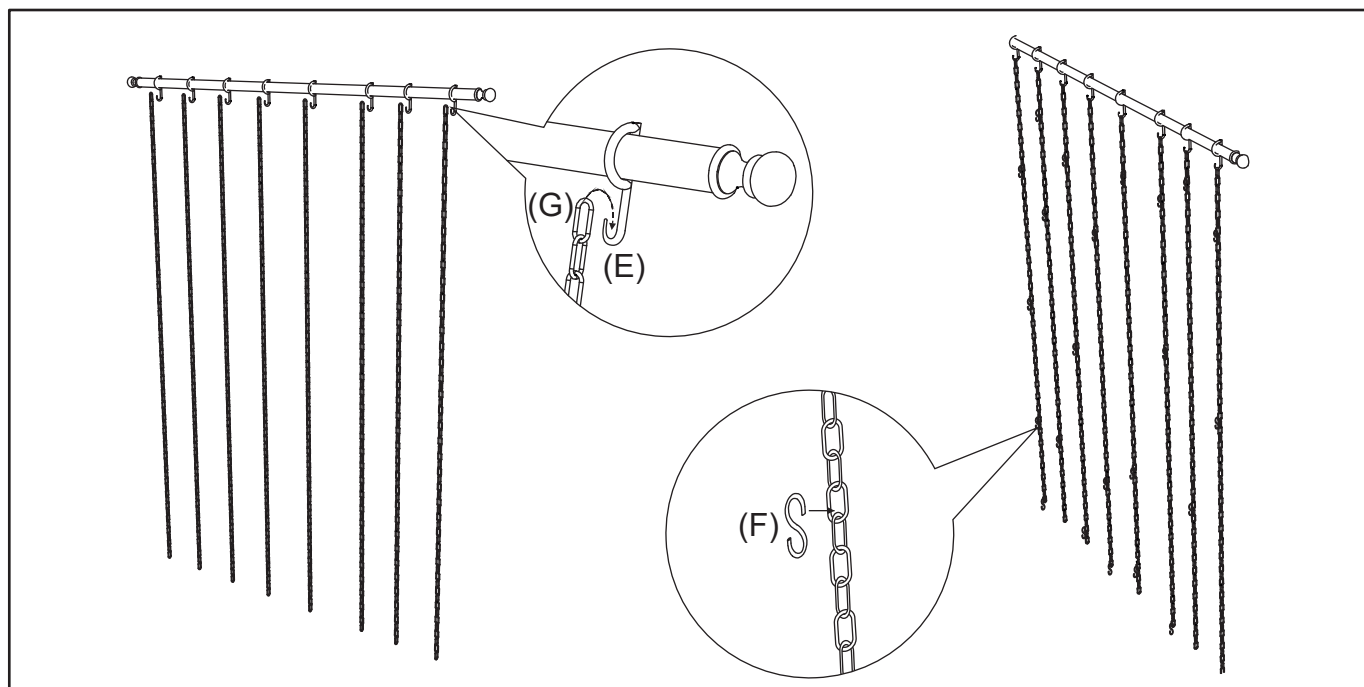
Customer Service: 800-367-2810
Online: www.ballarddesigns.com

STEP 3: Finial(s) (D) must be removed from Rod (C) before Rod Hooks (E) may be added. Orient each Rod Hook as illustrated and gently slide toward center of Rod. Replace Finial(s) when complete. NOTE: Remove and install Finial by gently pulling out or pushing in.



STEP 4: Carefully hang each Chain (G) from each Rod Hook (E). Use Chain Hooks (F) as needed/required for display.

 **NOTE** Chain length may be adjusted by using pliers to gently open and remove links.



Cleaning and Care

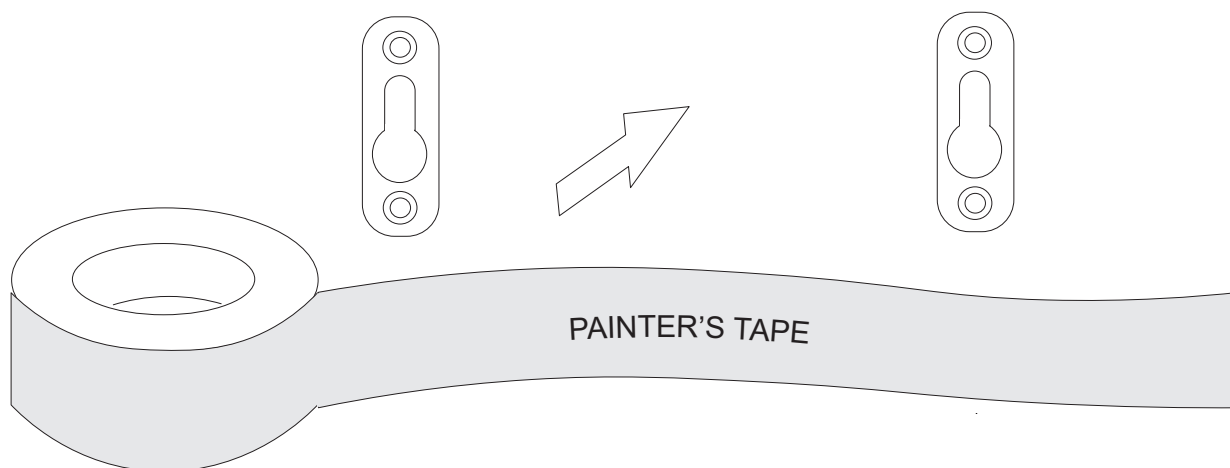
Periodically dust with a soft, dry cloth.
Protect surfaces to prevent damage.
Do not use alcohol based cleaners or polishes.



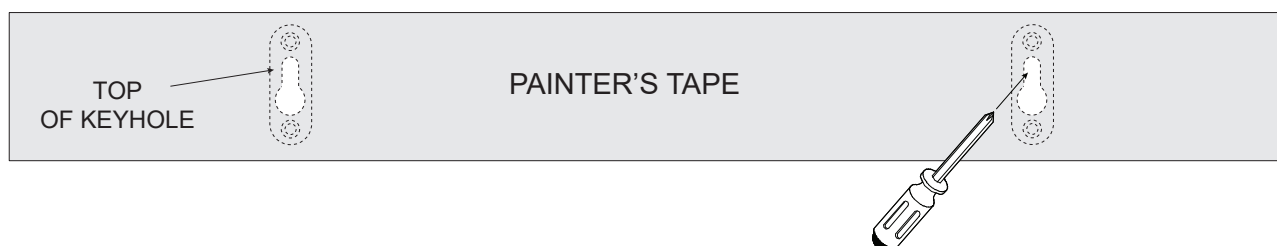
Customer Service: 800-367-2810
Online: www.ballarddesigns.com

How to Create a Template for Keyhole Brackets

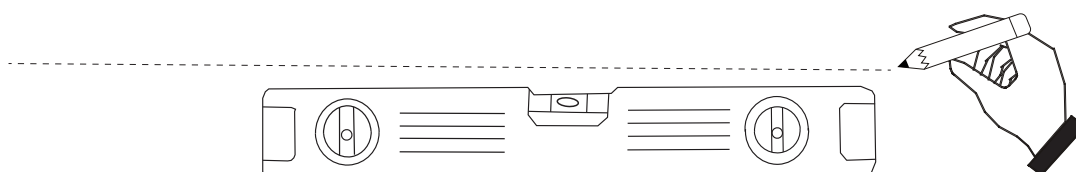
- 1** Place a strip of Painter's Tape over both Keyholes on back of item to be hung.



- 2** Use a Screwdriver or other pointed tool to punch a hole in tape at TOP of each Keyhole.



- 3** Use a Level and Pencil to mark wall at installation location.



- 4** Remove Tape from back of item, place on wall at level line and mark location of punches. Remove Tape and follow instructions for creating holes and installing specific hardware.

