

PRODUCT NAME: Aris Glass Cabinet

ITEM NUMBER: MA254

ASSEMBLED DIMENSIONS : 83"H x 44"W x 14"D




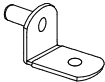

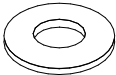
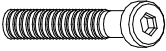
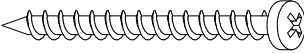
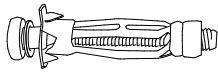
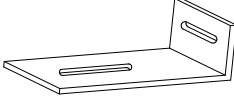

PRODUCTS ARE NOT INTENDED
FOR COMMERCIAL USE.

UPDATED: 02-07-2020

MADE IN INDONESIA

Page 1 of 5

▲ Assemble in location for intended use.

| Ltr. | Qty. | Included Hardware | |
|------|------|--|---|
| A | 8 |  | Shelf Screws |
| B | 8 |  | Shelf Supports |
| C | 4 |  | Lock Washer |
| D | 4 |  | Flat Washer |
| E | 2 |  | Small Bolts (Anti-Tip) |
| F | 2 |  | Large Screws (Anti-Tip) |
| G | 2 |  | Expansion Bolts + Small Washer (Anti Tip Kit) |
| H | 2 |  | Wall Bracket (Anti-Tip) |
| I | 1 |  | Allen Wrench |



WARNING

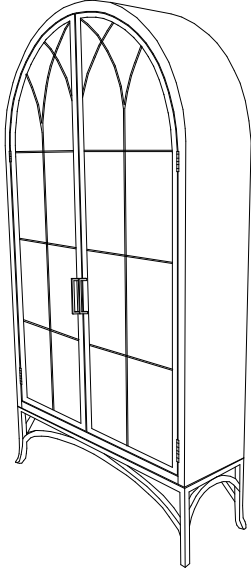
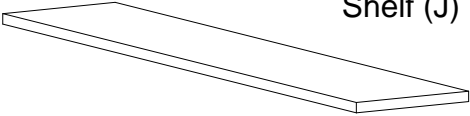
Tip-Over Hazard
ANCHORING HARDWARE INCLUDED

Serious or fatal crushing injuries can occur from a furniture tip-over. Prevent tipping accidents. Anchor your furniture.

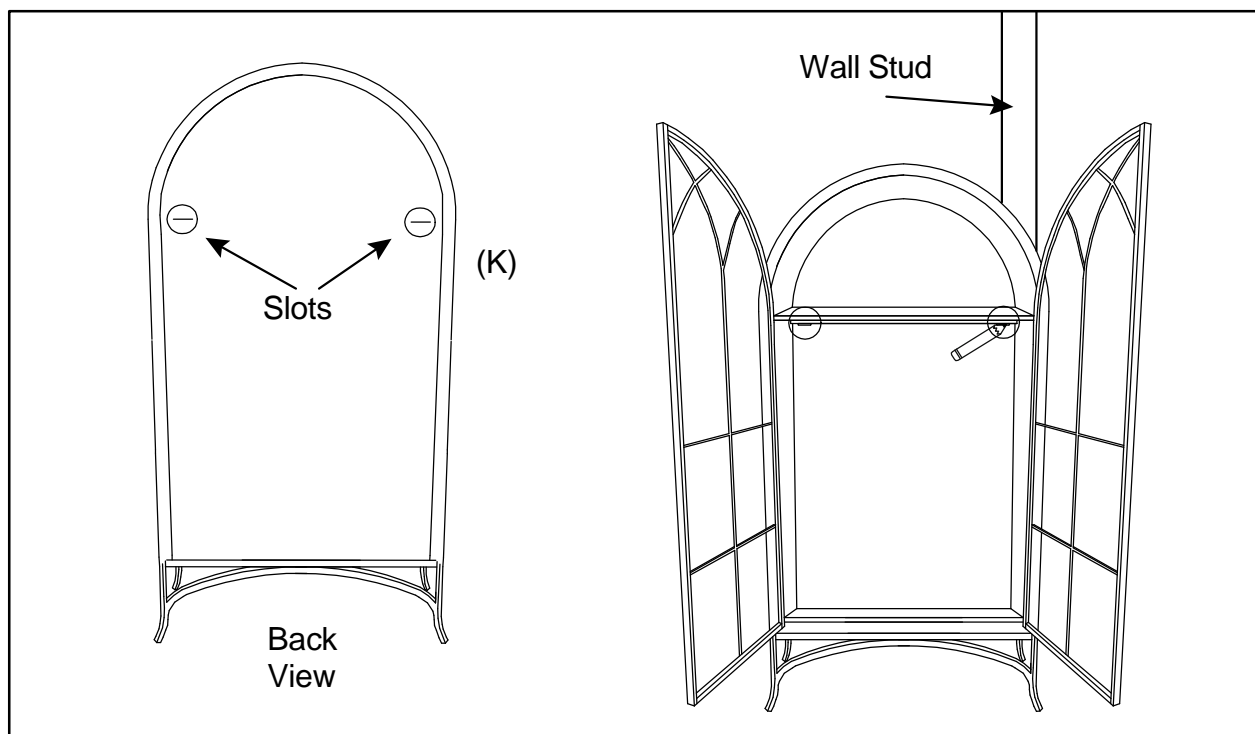
REQUIRED TOOLS:
 Allen Wrench (included),
 Phillips Screwdriver, Drill,
 Small Hammer, Pencil
-Two person assembly suggested.

Remove all parts, hardware and protective packaging from carton and carefully arrange on a clean, level, padded surface.

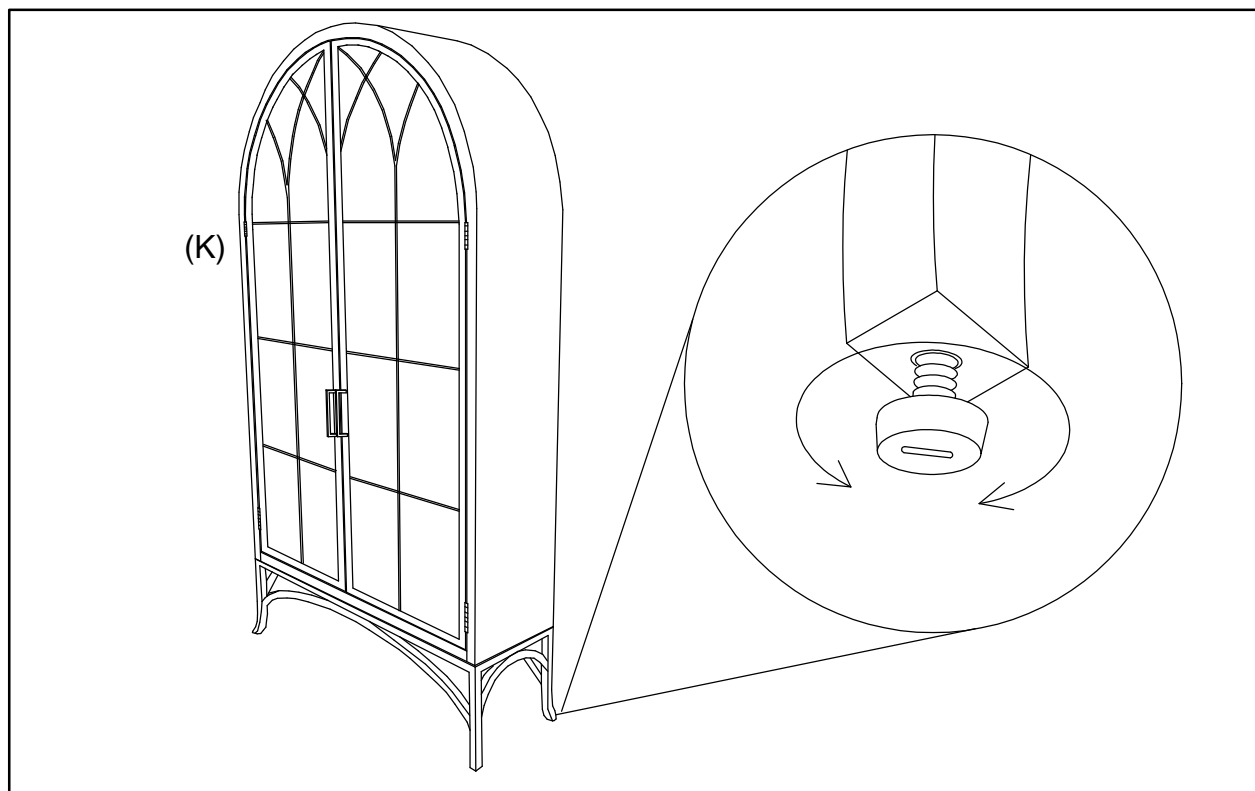
NOTE: To avoid accidentally discarding small parts or hardware, retain all carton contents until assembly and installation are complete.

| Ltr. | Qty. | Components | |
|------|------|---|--|
| J | 2 |  |  |
| K | 1 | | |

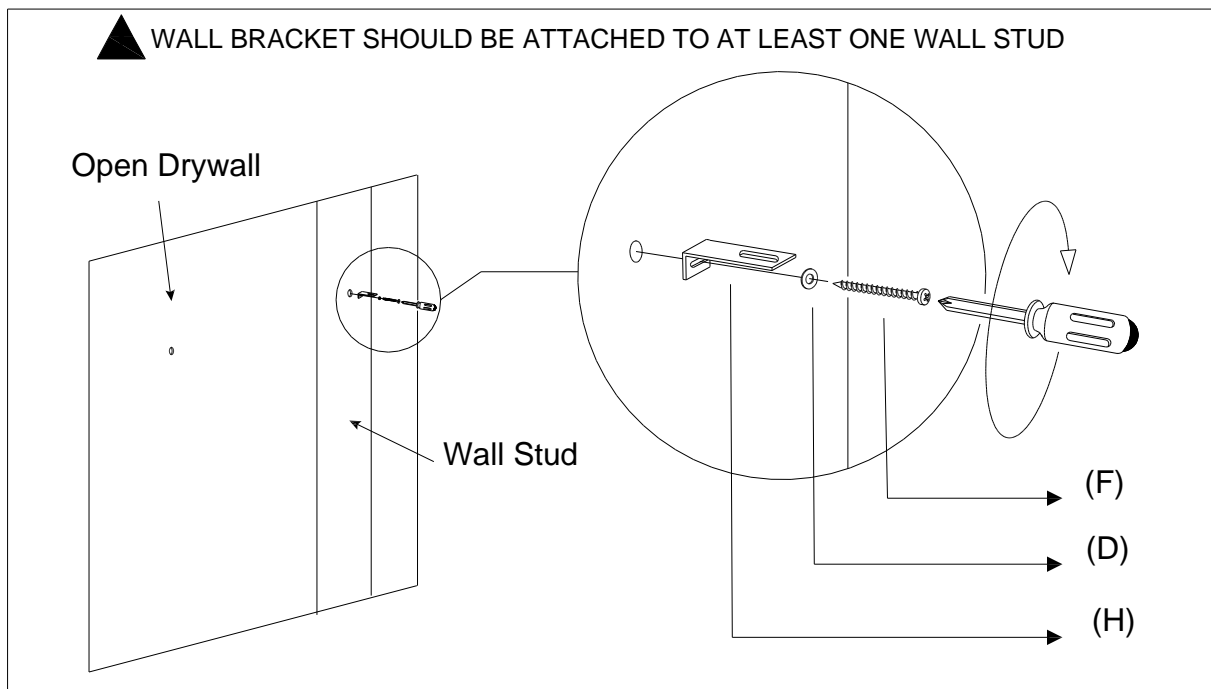
STEP 1: Cabinet poses a tip-over hazard and must be anchored to wall. When choosing location for use, locate two WALL STUDS in wall behind Cabinet (L) and mark each. Locate both SLOTS on back of Cabinet and, if possible, center at least one Slot over a Wall Stud. With Cabinet pushed fully against wall, mark location of both Slots by sticking pencil through slot and marking wall.



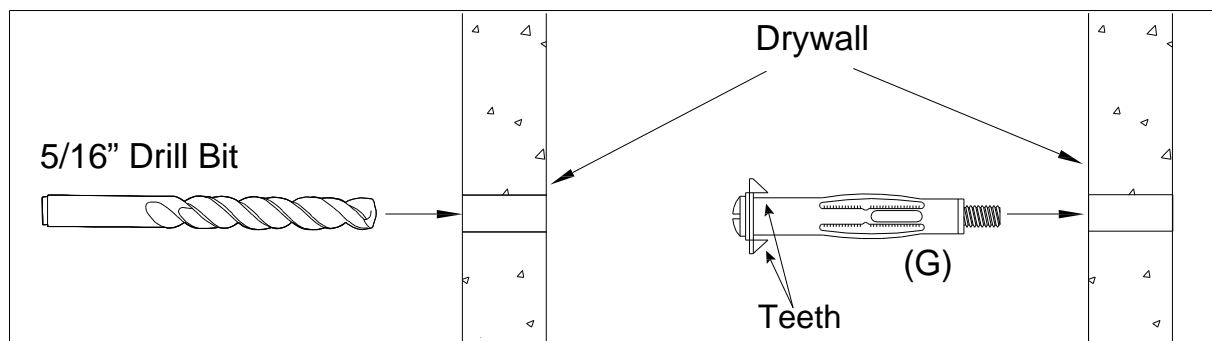
STEP 2: Position Cabinet (K) in location for intended use and check for level. Cabinet is equipped with Rotary Levelers located under each corner. If necessary, Cabinet may be adjusted by carefully lifting applicable corner and turning Leveler clockwise/counterclockwise. **NOTE:** Check marks from STEP 1 and redraw if Cabinet has moved up or down during leveling process.



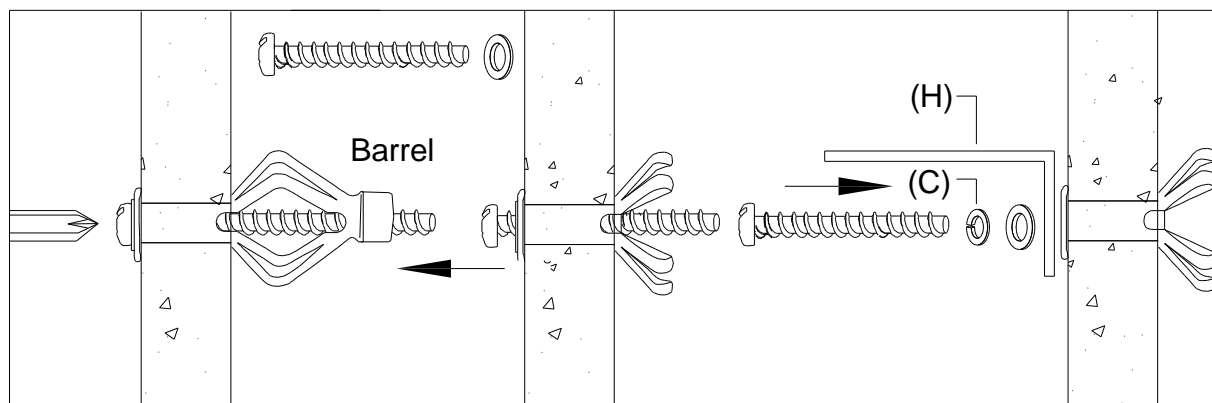
STEP 3: Pull Cabinet (K) away from wall and attach Wall Bracket (H) at marked locations. Bracket is designed to slide into Slot from back so it is imperative Bracket's top edge is on pencil mark. For Bracket over a Wall Stud, directly drive in Large Screw (F) with Flat Washer (D). For location over OPEN DRYWALL, see Step 4 & 5 for installation of Expansion Bolt (G).



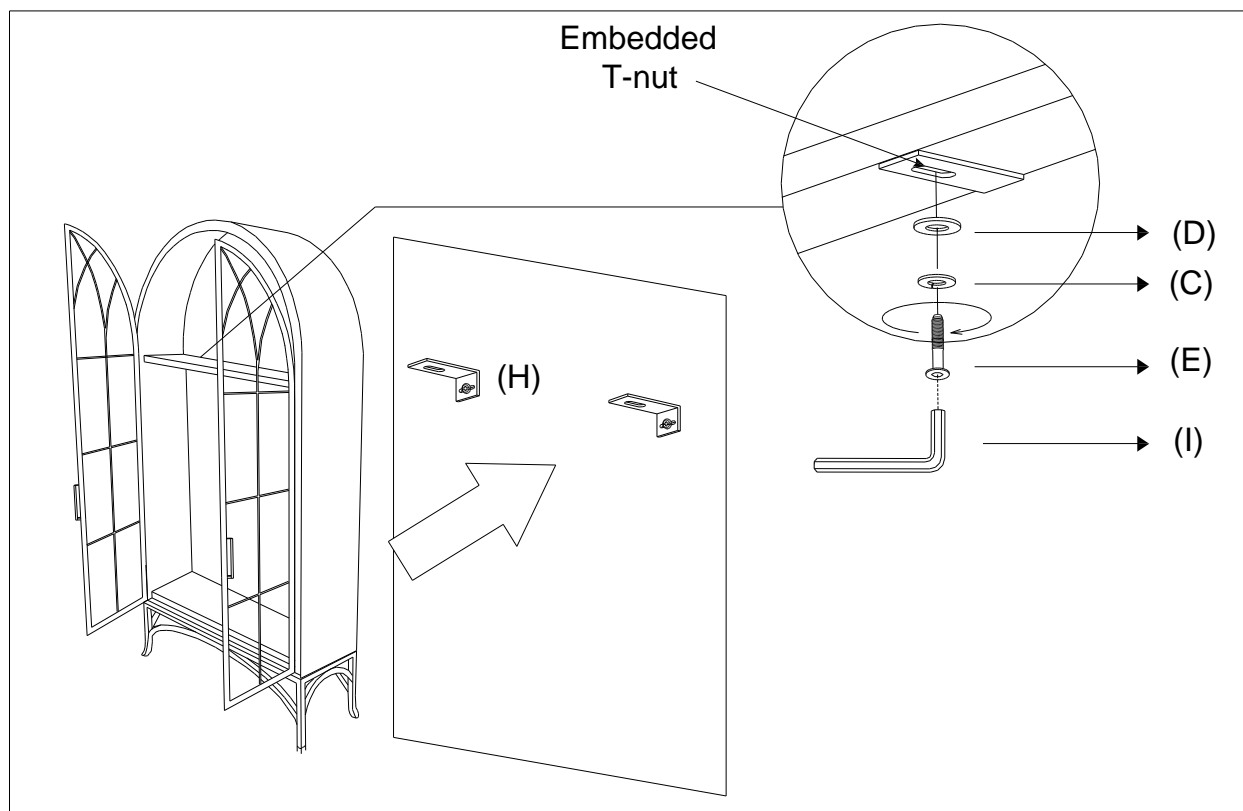
STEP 4: For Bracket (I) location in Open Drywall, first use a 5/16" bit and drill a small pilot hole. Next, use a Hammer to GENTLY tap in Expansion Bolt (H) until Teeth sink evenly into wall surface,



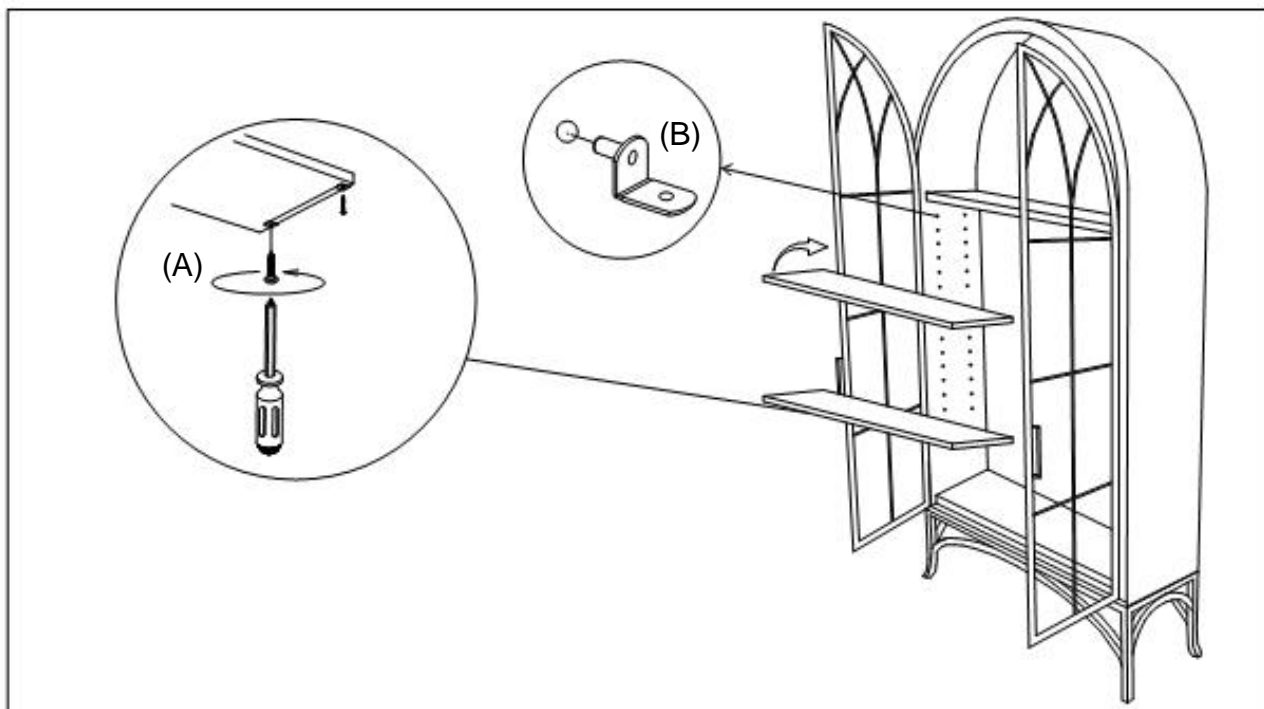
STEP 5: Turn Bolt clockwise until it begins to slip, indicating Barrel has fully crimped and secured against the inside of wall. Finally, turn Bolt counter-clockwise and completely remove. Take out the small flat washer and insert the lock washer (C) then reinsert back the small flat washer onto Bolt then secure Bracket to wall by reinserting and tightening Bolt.



STEP 6: Carefully move Cabinet (K) back into place while fitting Brackets (H) into Slots. Brackets are designed to fit under wood ledge in back of Cabinet. Once aligned, insert Small Bolt (E) with Lock Washer (C) and Flat Washer (D) into embedded t-nut then firmly tighten using Allen Wrench (I).



STEP 7: Install Shelf Supports (B) into pre-drilled holes at desired height. Lay Shelf (J) onto Supports and secure by inserting Shelf Screws (A) into Shelf through bottom of Support. Firmly tighten and secure.



Cleaning & Care:

DO NOT use alcohol based products or spray polisher as they can damage the finish. Dust with soft cloth.