



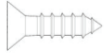

PRODUCT NAME: Newberry Wall Shelf
ITEM NUMBER: KS012
ASSEMBLED DIMENSIONS: 40"H x 23 1/4"W x 6 3/4"D


FULLY ASSEMBLED REQUIRED TOOLS:

Phillips Screwdriver, Level

Assembled Weight: 13.4 lbs

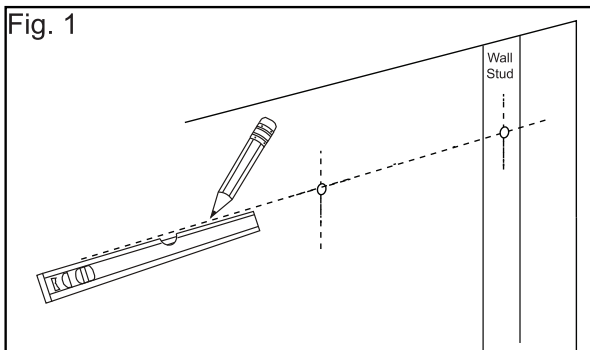


Ltr.	Qty.	Hardware Included	
A	8		3/4" Wood Screws
B	2		Wall Brackets

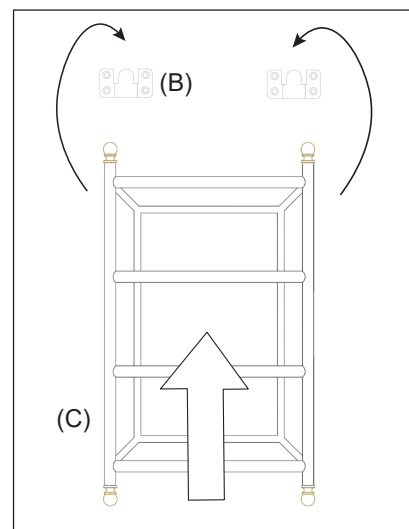
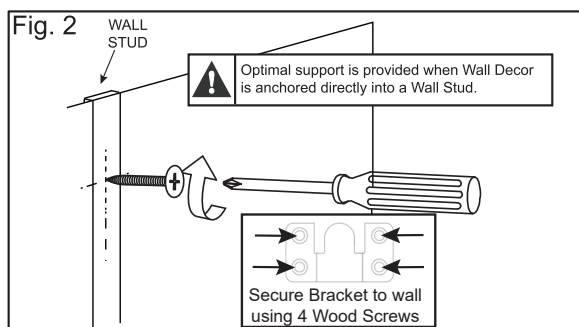
Ltr.	Qty.	Component	
C	1		Shelf

STEP 1: Determine location for installation, then use a level and Pencil to mark wall (Fig.1).
See *PAGE 2* for creating an easy template for placing interlocking wall brackets.

NOTE: Maximum support provided when at least one screw is driven directly into a wall stud.



STEP 2: Carefully lift Shelf (C) to installed Wall Brackets (B) then fit interlocking Bracket attached to back of Shelf over. Gently pull down to lock into place.



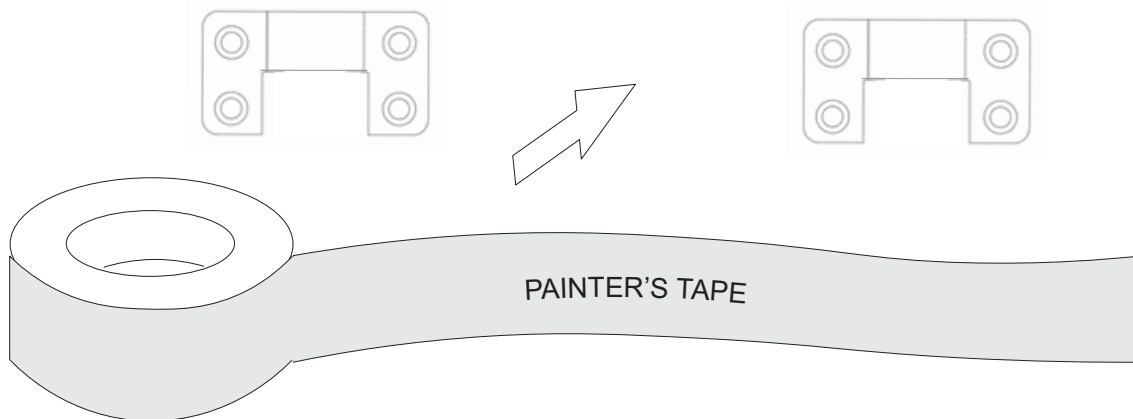
PRODUCTS ARE NOT INTENDED
FOR COMMERCIAL USE.

UPDATED: 1-15-2025

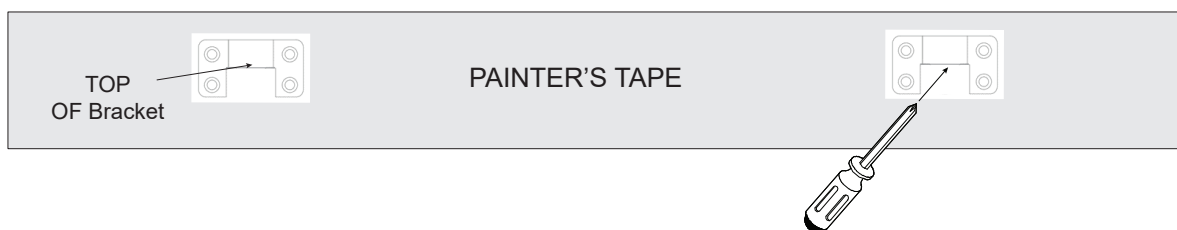
MADE IN PHILLIPINES

How to Create a Template for Wall *Brackets

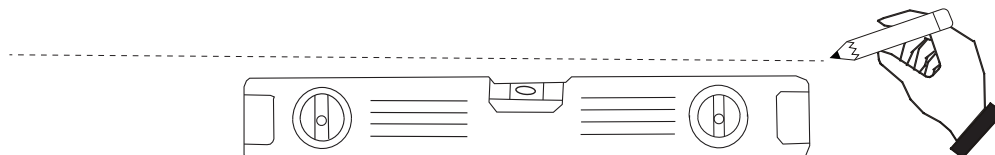
- 1** Place a strip of Painter's Tape over both *Brackets on back of item to be hung.



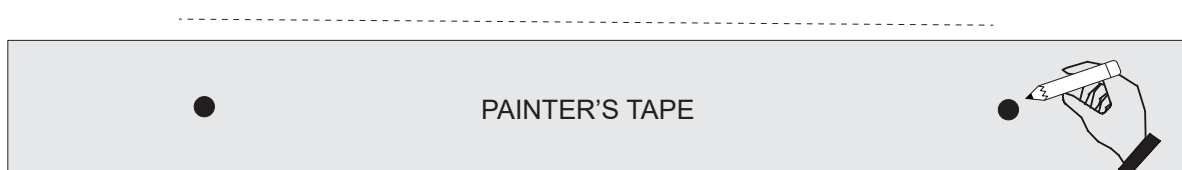
- 2** Use a Screwdriver or other pointed tool to punch a hole in tape at TOP of each *Bracket.



- 3** Use a Level and Pencil to mark wall at installation location.



- 4** Remove Tape from back of item, place on wall at level line and mark location of punches. Remove Tape and follow instructions for creating holes and installing specific hardware.



*NOTE: Template is for interlocking brackets. Image may not match bracket that is included with this item.

