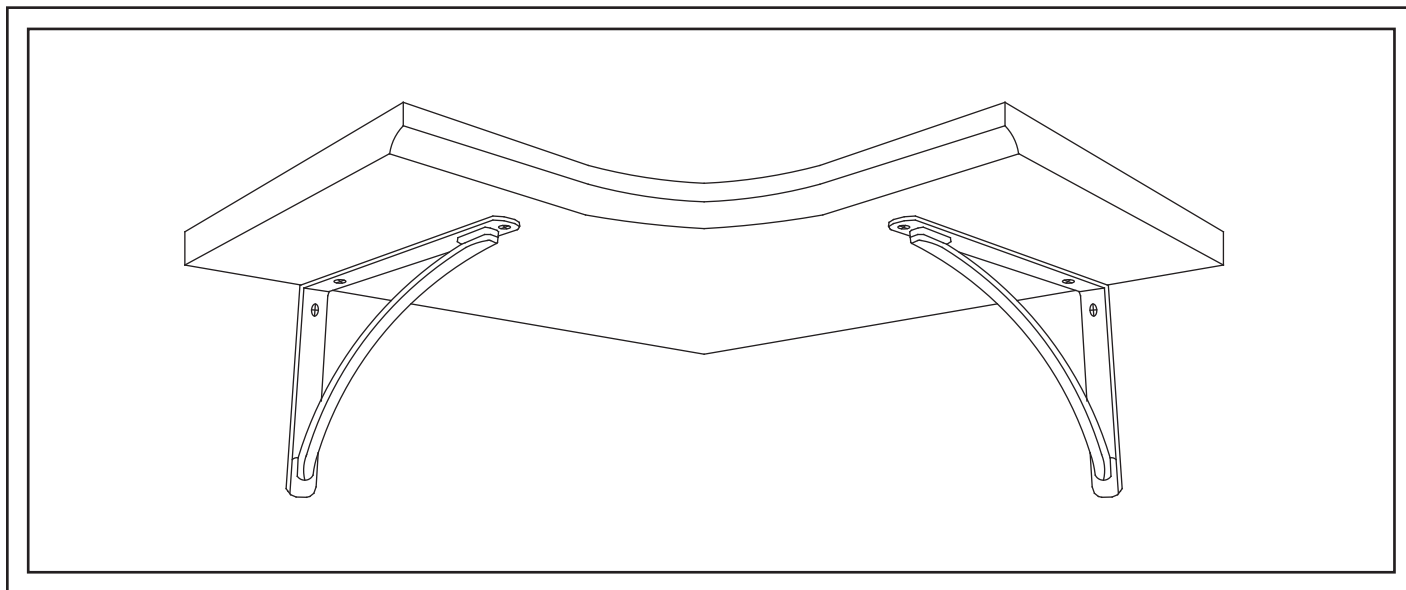


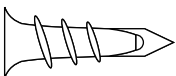
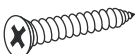




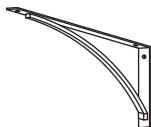
PRODUCT NAME: Valet Corner Shelf

ITEM NUMBER: KS001

ASSEMBLED DIMENSIONS: 8.35"H x 24"W x 24"D



Ltr.	Qty.	Hardware Included	
A	2		Wall Anchors
B	2		Large Wall Screws
C	4		Small Set Screws

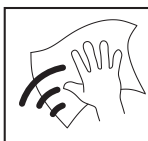
Ltr.	Qty.	Components	
D	1		Shelf (D)
E	2		Brackets (E)

## REQUIRED TOOLS:

Phillips Screwdriver, Hammer,  
Pencil, Level, Punch Tool or Drill

-Two person assembly suggested.

Remove all parts, hardware and  
protective packaging from carton  
and carefully arrange on a clean,  
level, padded surface.



## Cleaning and Care

Periodically dust with a soft, dry cloth.  
Protect surfaces to prevent damage.  
Do not use alcohol based cleaners or polishers.

PRODUCTS ARE NOT INTENDED  
FOR COMMERCIAL USE.

UPDATED: 3-14-2022

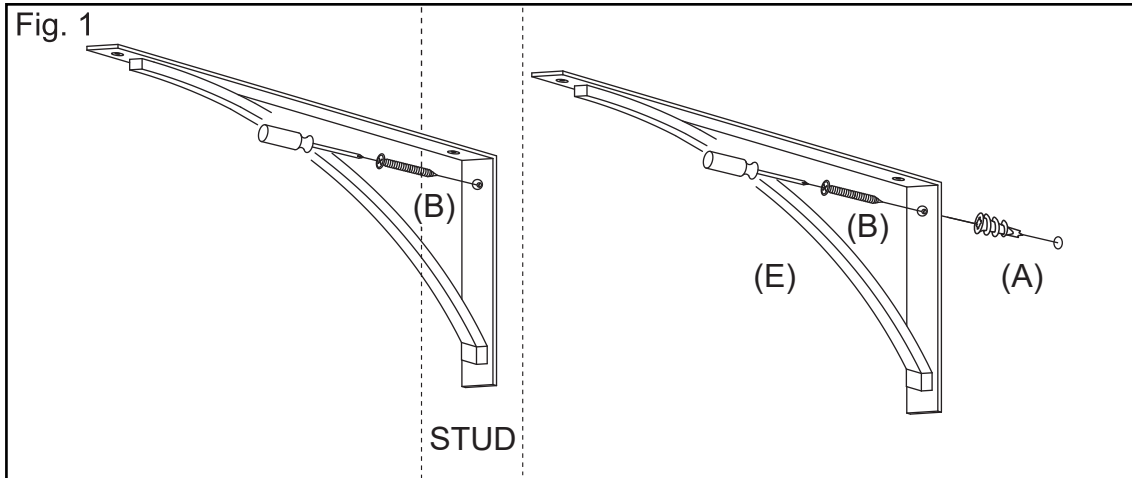
MADE IN INDONESIA

Page 1 of 2

**⚠ Maximum support provided when Bracket is anchored to a Wall Stud.**

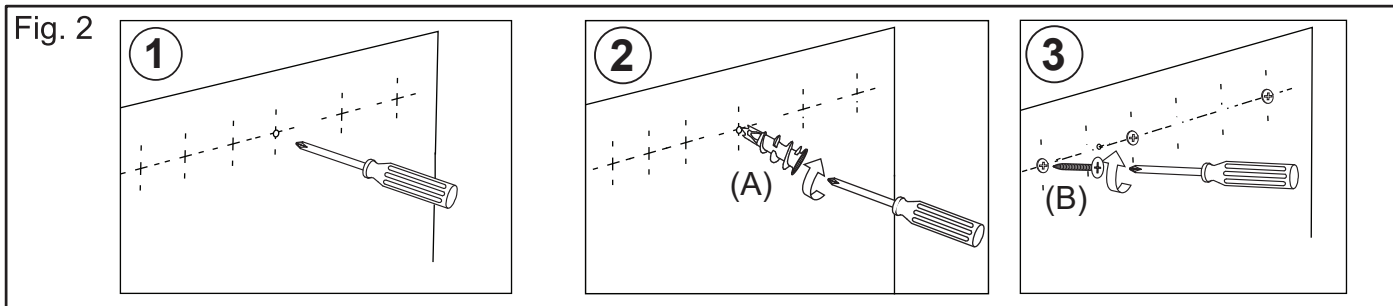
**STEP 1:** Determine placement then locate and Pencil mark WALL STUDS inside wall. Use a Level to position Brackets (E).

For INSTALLATION INTO A WALL STUD mark and drive Wall Screw (A) directly into Stud (Fig. 1).  
For INSTALLATION INTO OPEN DRYWALL (no stud) use a Wall Anchor (B) (Fig. 2)



**⚠ Use Wall Anchors in open drywall. Do not use when wall stud is present.**

**INSTALLING TAP-IN ANCHORS:** 1. Mark location then use a pointed tool to create a **very small** pilot hole. 2. Use a screwdriver to push in and turn Anchor (A) until level with wall surface. 3. Align Bracket (E) then turn in and tighten Large Wall Screw (B).



**STEP 2:** Set Shelf (D) upon Brackets (E) then insert and tighten all four Small Set Screws (C) using a Phillips Screwdriver.

