



PRODUCT NAME: Callista 2 Drawer File Cabinet  
ITEM NUMBER: CF001  
ASSEMBLED DIMENSIONS: 30.5"H X 18"W X 18"D

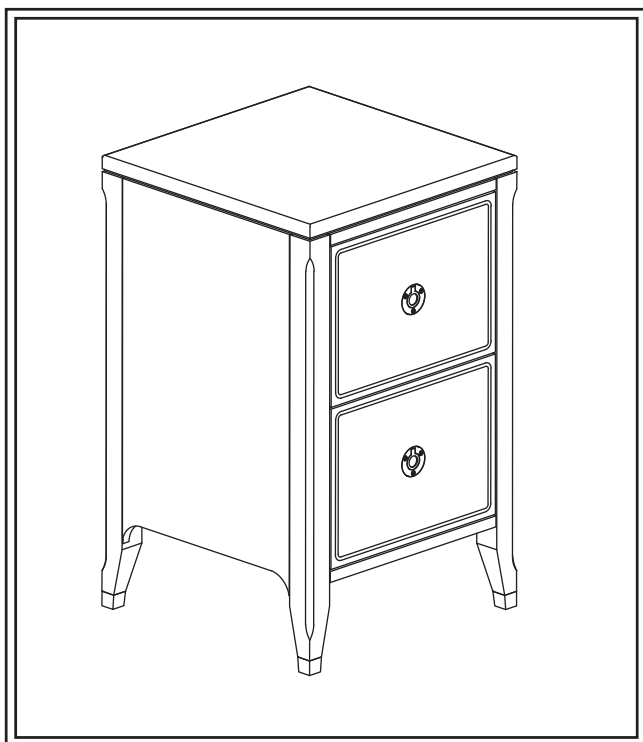


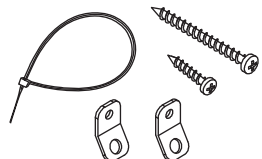

## REQUIRED TOOLS:

Phillips Screwdriver

## FULLY ASSEMBLED

Assembled Weight: 68 lbs.

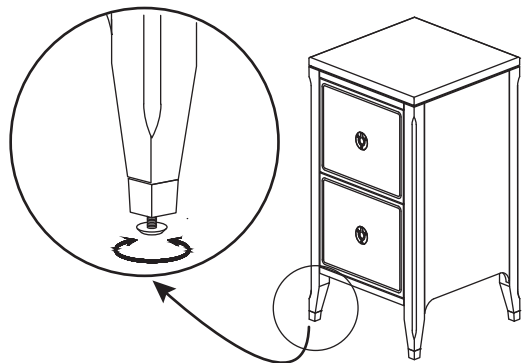


Ltr.	Qty.	Hardware/Components Included
A	2	 <p>Wall Anchoring (Anti-tip) Kit See page 2</p>
B	1	 <p>Cabinet (File Drawers feature plastic runners around top edge for hanging file folders. Letter: Front to back. Legal: Side to side.)</p>

**LEVELERS:** Equipped with Rotary Levelers installed under each corner/leg. If necessary, adjustments may be made by carefully lifting applicable corner and turning Leveler clockwise/counterclockwise.

### IMPORTANT

Set furniture into place and level before anchoring to wall.



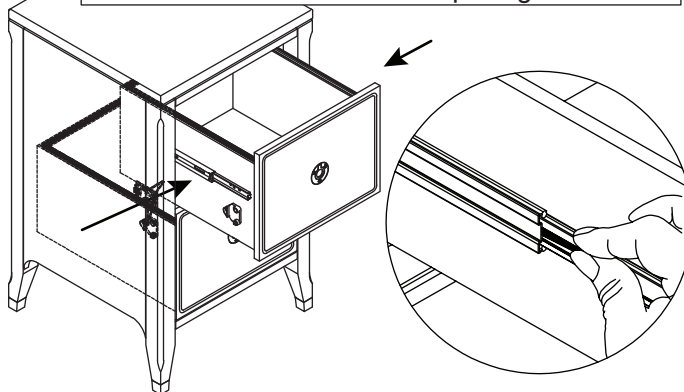
## FULLY REMOVING \*DRAWERS

Drawers feature metal glides.

First, fully open/extend Drawer

### TO REMOVE



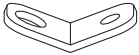

Push Lever in side rails up on one side and down on the other while pulling drawer out



To replace, align glides and push drawer in.

\*SAFETY FEATURE: Only ONE drawer may be opened at a time.

## WALL ANCHORING HARDWARE (ANTI-TIP)

Ltr.	Qty.	Hardware Included	
A	2		Large Screw
B	2		Small Screw
C	4		Bracket
D	2		Retention Belt



### Installation:

1. Place furniture against wall at desired location then locate and mark a Wall Stud behind unit.
2. Corresponding to Stud location, attach one Bracket (C) to back of unit using Small Screw (B).
3. To keep hardware out of view after installation, attach remaining Bracket (C) **INTO WALL STUD** with Large Screw (A) 2 inches below Bracket attached to back of unit.
4. Move unit into place, align Brackets then connect both using Retention Belt (D).
5. Confirm Belt is securely laced and locked.

